



# Kalykes Reality Pvt. Ltd.

13/1P-336/1, Sahapur Colony, 1st Floor, P.S. - New Alipur,  
Kolkata - 700 053.

Mob. : 9836971414 / 9674657187

Ref.

Date : .....

## TO WHOM IT MAY CONCERN

This is to inform you that the Land upon which the development of our project "**Kusum Nivas**" situated at 1, Pran Krishna Chandra Lane, R.S. No.185 Dag No. 334, 336, , in Mouza – Italgata , J.L. No. 10, Touzi No. 3, P.S. - Behala, P.O. – New Alipore and within the Jurisdiction of Kolkata Municipal Corporation, Kolkata, West Bengal, has no encumbrances whatsoever including any right, title and interest of any party over such land.

KALYKES REALITY PVT. LTD.

*Ashish* . Director

For & on behalf of  
M/S Kalykes Reality Private Limited

Director

Place:

Date:



# Kalykes Reality Pvt. Ltd.

13/1P-336/1, Sahapur Colony, 1st Floor, P.S. - New Alipur,  
Kolkata - 700 053.

Mob. : 9836971414 / 9674657187

Ref.

Date : .....

## TO WHOM IT MAY CONCERN

I, **Mr. Rajesh Kumar Singh**, son of Baijnath Singh, one of the Directors of "**Kalykes Reality Private Limited**", a company incorporated under the Companies Act, 1956/2013, having its registered office at 13/1, (P - 336/1) Sahapur Colony Kolkata - 700053, And site office at .....N/A.....(if any) and having CIN - **U74999WB2018PTC224587** and PAN - **AAGCK9546C**;

That our Real Estate project named "**Kusum Nivas**" situated at 1, Pran Krishna Chandra Lane, R.S. No.185 Dag No. 334, 336, , in Mouza - Italgata , J.L. No. 10, Touzi No. 3, P.S. - Behala, P.O. - New Alipore and within the Jurisdiction of Kolkata Municipal Corporation, Kolkata, West Bengal, hereby declare that the construction activities of the Project will be commence after receipt of RERA Registration Number.

For and on behalf

M/S Kalykes Reality Private Limited

 **Director**

Director

Place:

Date:



# Kalykes Realty Pvt. Ltd.

13/1P-336/1, Sahapur Colony, 1st Floor, P.S. - New Alipur,  
Kolkata - 700 053.

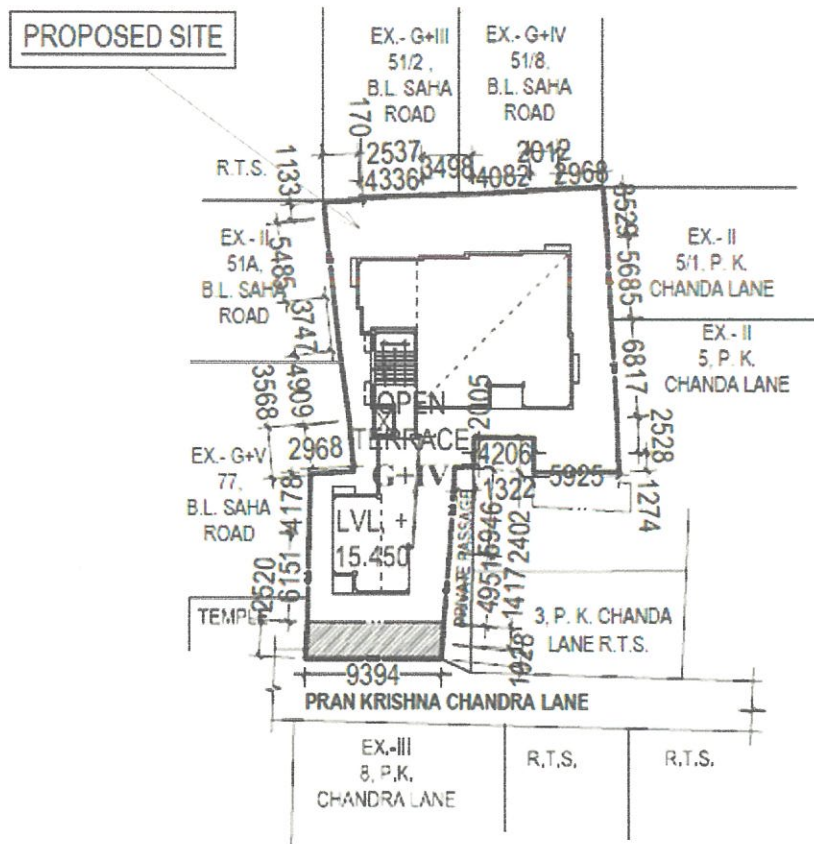
Mob. : 9836971414 / 9674657187

Ref.

Date : .....

## SITE PLAN WITH LAT LONG RWQUIRED ON DEVELOPER'S LETTER HEAD

CO-ORDINATE IN WGS 84	
LATITUDE	LONGITUDE
22°49'94" N	88°34'04" E



**SITE PLAN.** SCALE : 1 : 600

KALYKES REALTY PVT. LTD.

*Aishwarya* Director